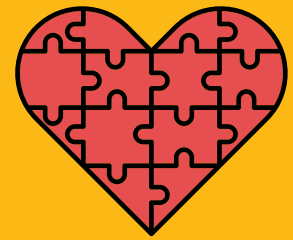


Covid-19 and Takeaway Food

What you must do to help save lives



What do the rules say?

The Government has introduced new legislation to ensure some food businesses such as restaurants are closed. Food delivery and takeaway businesses can remain open and operational.

There are strict guidelines on what you must do to prevent the spread of the virus and ensure that your staff and customers stay safe.

Where you remain open please adhere with social distancing guidelines during the delivery of foods to customers and when customers collect foods.

Please adhere to the following:

- Encourage home deliveries wherever possible.
 - No orders should be taken in person on the premises
 - Encourage customers to order via the telephone or online.
-
- Consider installing plastic screens at counters, and where possible provide masks to staff to assist with preventing face touching.
 - Erect signs to tell customers about your coronavirus precautions and prevent walk-ins.
 - Provide hand sanitisers (with a minimum alcohol content of 60+%) at entrances and exits.
 - Clean contact areas such as counters, debit card PIN pads, and doors.
 - Limit customer numbers allowed in to your takeaway to ensure customers can easily maintain a 2 metre distance between each other and your staff.
 - Before your takeaway is at customer capacity, control the entry and exit of customers to operate a one in, one out policy.
 - Ensure social distanced queuing inside and outside, by using floor tape to mark a safe distance from other customers.
 - Encourage contactless payment for collections.
 - Stagger collection times to avoid customers arriving at the same time.
 - Take card payments over the phone or online when orders are placed for collection or delivery.
 - Delivery drivers to stay 2 metres from customers at delivery. Leave food on doorstep, knock on the door and step back 2 metres.
 - Delivery drivers should wash hands with soap and water (or use hand sanitiser with a minimum alcohol content of 60+%) between deliveries.

020 7926 2999
lambeth.gov.uk/coronavirus

Support our NHS


Lambeth